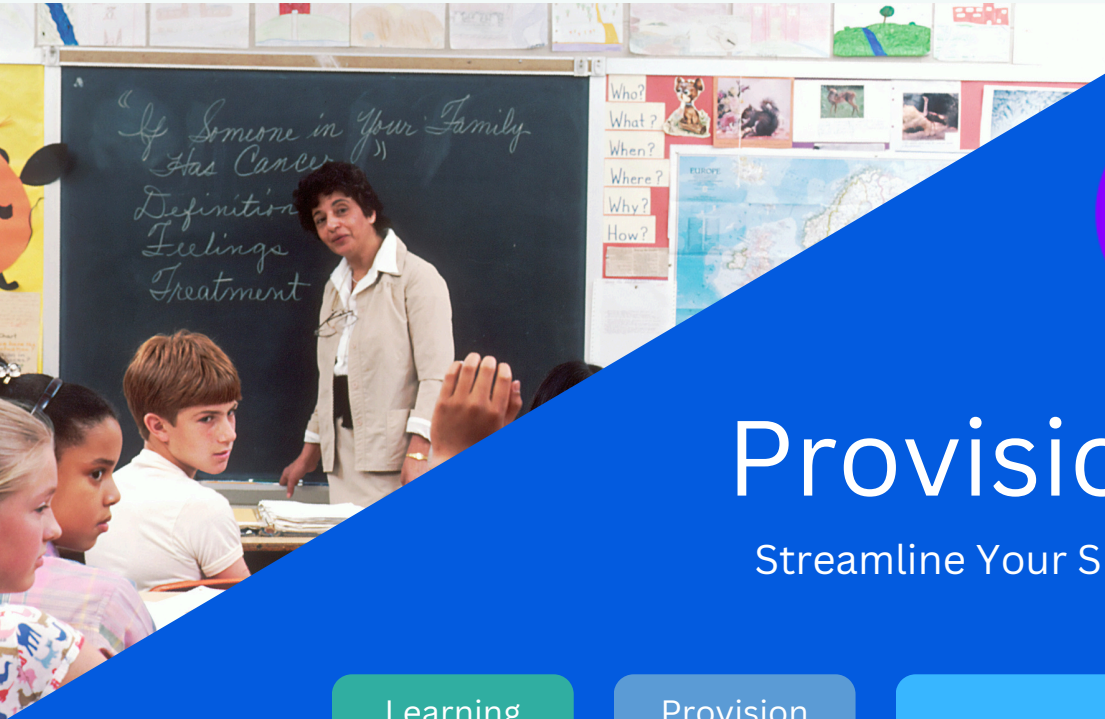




SchoolVue
Supporting Education



ProvisionVue

Streamline Your SEN Processes

Learning
Plans

Provision
Maps

Interventions

Reviews

About Us

Schoolvue was established by a group of educators with the aim to provide tools and expertise to enable schools to thrive whilst providing excellent value for money. We work with Schools day in day out collaboratively to develop our offering.

Our platform has been developed in partnership with schools.

Built by teachers for teachers!

Our Customers:

Multi Academy Trusts

Primary Schools

Secondary Schools

FE Colleges

Special Schools

Pupil Referral Units



“We had the pleasure of working with the Valley Invicta Academies Trust and the St John Fisher Catholic Comprehensive School to help us build this tool. SENCOs work incredibly hard to ensure that the needs of our SEND students are met. However, the sheer amount of compliance and administration can be overwhelming.

We are confident this new tool will make a huge difference to workload.”

Jon Munt, Founder

A Special Thank You

A special thank you must go to **Dr Alison Ekins** of Valley Invicta Academies Trust and Canterbury Christ Church University who approached us to take on this project. The fundamental approach to SEND provision planning and mapping embedded within the tool has come from Alison.



Dr Alison Ekins
Project Inspiration



Tiarnan Hamilton
SchoolVue Lead Developer

“The SENCO workload can be really intense and overwhelming, so to see our SENCOs faces light up as we were showing them ways that the documents will link to create the Maps and reports that they need was just so wonderful. This tool is going to have a significant impact on our ability to effectively plan and map high quality provisions for our students with SEND, and the reporting tools that you have built within the system will really help us to strategically review the impact of the provisions that we have put in place.”

“I must confess to being no expert when it came to SEND in Schools and the administration processes involved at the beginning of this project. However, since spending the last six months working with Alison Ekins and her team of SENCOs I have gained so much knowledge and insight into the heroic work that goes on. The pressures on SENCOs time are huge and our Provision Vue tool is a great example of how technology and AI should be used to reduce the workload in education.”

SENDCO	Total SEND	20%	
41	17.0%	44	18.3%
43	15.9%	46	17.0%
29	10.7%	32	11.8%
22	8.1%	31	11.4%
27	10.0%	39	14.5%
9	5.5%	12	7.4%
11	5.5%	11	5.0%
10	5.5%	215	12.9%

Area of Need Counts	No. Students
One Area of Need	138 (64.2%)
Two Areas of Need	60 (27.9%)
Three Areas of Need	17 (7.9%)
Four Areas of Need	0 (0.0%)

Name	Year	Registration	Frequency	Sessions Attended	Mon	Tue	Wed
Lindsay Buckingham	9	9B		5	21/10/2024	22/10/2024	23/10/2024
David Crosby	7	7B		12			

Group: 9 SA

Status: F

D Status: K

Add Plan

Plans

Documents

Exam Access Arrangements

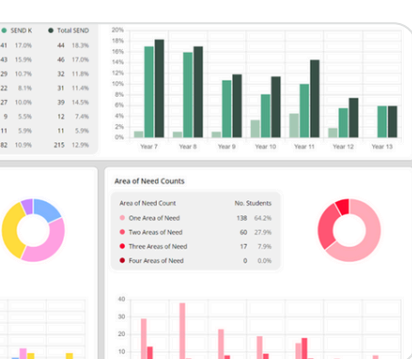
Provision / Resources / Strategies

Intervention

Zones of regulation

Char bands: Suggested to trial these in Core subjects where the struggles to sit for longer than 10 mins.

Movement break card: Chrome will need to be reminded the can use this to remove herself from the room before she becomes dysregulated.



Active Plans

Plan Type	Number of Plans	Average Impact
Record of Outcome	5	0.13
Personalised Plan	3	0.94
Provision Plan	2	0.89
All Plans	10	0.68

Highest Average Plan Impact

Student	Reg Group	Avg. Impact
John Phillips	8B	+1.15
Graham Nash	7B	+1.5
John Phillips	8B	+1.15
Walter Becker	10B	-1
John Paul James	11A	+0.88
Christine Perfect	9A	+0.67

Lowest Average Plan Impact

Student	Reg Group	Avg. Impact
Mick Fleetwood	9A	-1

Interventions

Area of Need	No. Students	Avg. Impact
Communication and interaction	5	16 (0.75)
Cognition and Learning	5	25 (0.86)
Social, Emotional and Mental Health	3	7 (0.57)
Sensory and/or Physical	4	9 (0.0)
All	57	0.68

Intervention Impact by Term

Autumn 2024/25 intervention groups

Intervention Group	Intervention	Area of Need	Lead Staff	Group Expected Outcome	No. Students
Group 1	Break time Maths communication booster	Communication and Interaction	Grace Hopper	To attend these sessions to review his maths subject knowledge through discussion work.	1
Group 1	Circle of Friends	Social, Emotional and Mental Health	Charles Babbage		2
Group 1	ELSA	Social, Emotional and Mental Health	Charles Babbage	To be able to demonstrate self regulation skills.	1
Group 1	GCSE study skills	Cognition and Learning	Charles Babbage	To review visual ways to revise and recall key information. To apply for post-16 courses.	2
Group 1	GCSE study skills	Communication and Interaction	Grace Hopper	To support students to develop a variety of study skills techniques. To support students with WEX, CV writing and applications for post-16.	1
Group 1	KS4 English booster	Cognition and Learning	Liz Pereira	To work towards target grade 3 in English Language GCSE.	1
Group 1	KS4 Maths booster	Cognition and Learning	Hedy Lamarr	To work towards target grade 2 in GCSE or pass FS maths level 1.	1

SENDCO Data

Date	Mark	Comment
16/09/2024	Green	
26/09/2024	Green	
26/09/2024	Green	
26/09/2024	Green	
03/10/2024	Green	
10/10/2024	Green	
17/10/2024	Absent	
24/10/2024	Absent	
07/11/2024	Green	
14/11/2024	Absent	
21/11/2024	Absent	
28/11/2024	Absent	Missed 3 consecutive weeks. Speak to SENDCO that perhaps needs to be withdrawn from this term and start again next term!

Students

SENDCO	Autumn Interventions with Impact	Autumn Interventions Avg. Impact	Spring Interventions Assigned	Spring Interventions Reviewed	Spring Interventions with Impact	Spring Avg. Imp.
Shaw	1/1	1.00	1	0/1	0/1	
Becker	1/1	-1.00	1	1/1	1/1	
Buckingham	1/1	0.00	2	2/2	2/2	
Crosby	1/1	0.00	2	1/2	1/2	
Fleetwood	2/2	-1.50	2	1/2	1/2	
Gabriel	2/2	-1.00	3	3/3	3/3	
Harry	3/3	0.33	2	3/2	3/2	
Jones	4/4	0.55	4	4/4	4/4	
Nash	1/1	1.00	1	1/1	1/1	

2024/25 Personalised Plan (Sensory and/or Physical)

The success is an working towards:

By the end of Key Stage Debbie will be able to manage the sensory demands of her class

What I need to help me (resources):

Ear defender
Sensory pencils completed and a sticky note to sit at all staff
Wobble board
Movement mats

What to help me best (strategies):

Use sensory profile as a cross-reference needs to your classroom setting. Focus on hearing, sight, noise and smell from your OT guidelines to support named movement breaks and rests in your lesson.
Extra time in class.
Visual prompts.

Extra support (need interventions):

Area of Need	Lead Staff	Frequency	Expected Outcome	Review / How
Autism/AD/OS Touch/Sping club	Adi Lovelace	Weekly	To improve wobble board use by 10 each session.	When Debbie she is fully engaged with the sessions and she feels a bit more in control and on point of ending.
Spring 2024/25 Touch/Sping club	Adi Lovelace	Weekly	To improve wobble board use by 10 each session.	Great attendance recorded 20/24

Why Use ProvisionVue?

ProvisionVue will save SENCOs and their teams hours of administrative work. Use the banks of Interventions, Resources and Strategies when completing student plans. ProvisionVue will automatically generate Provision Maps and create intervention groups. All of the relevant information will feed back into a student's plan to support the completion of in year reviews. The technology does the heavy lifting.

ProvisionVue will transform the way SENCOs manage their provision.

Learning Plans

Three graduated student plans available

Provision plan

Personalised plan

Record of Outcome

Access arrangements

Provision Maps

Automatically generate your Provision Maps

Generate intervention lists

Create intervention groups

Assign lead staff

Time saving downloads

Interventions

Track and monitor your interventions

Expected outcomes

Monitoring registers

Complete reviews

Write back to student plans

Connect your MIS



Student Plans

PLAN

Provision Maps

Interventions

DO

Intervention
Reviews

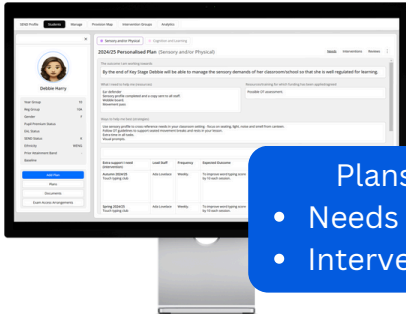
In-year Reviews

REVIEW

Impact

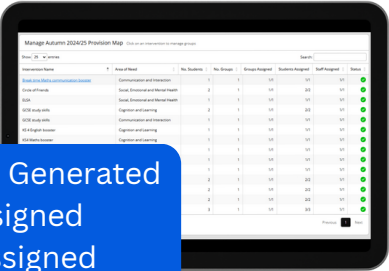


What Can ProvisionVue Do?



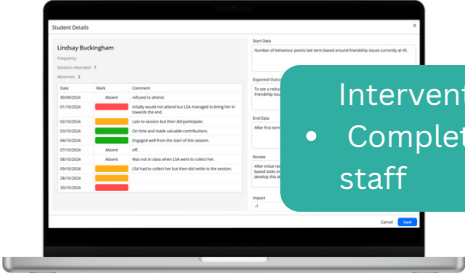
Plans Completed

- Needs Identified
- Interventions Assigned



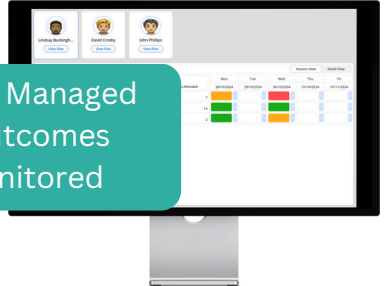
Provision Maps Generated

- Students assigned
- Lead staff assigned



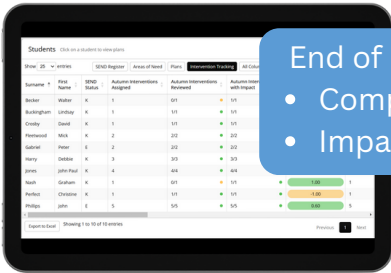
Intervention Reviews

- Completed by lead staff



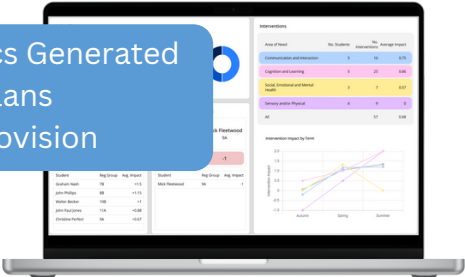
Interventions Managed

- Expected Outcomes
- Sessions Monitored



End of Provision Reviews

- Completed by SENCO
- Impact evaluated



Key Analytics Generated

- Student Plans
- Overall provision

Evaluate Impact?

One of the key benefits to ProvisionVue is the ability to evaluate impact. Using a simple impact scale each student is evaluated at the end of an intervention which drives the analytics.

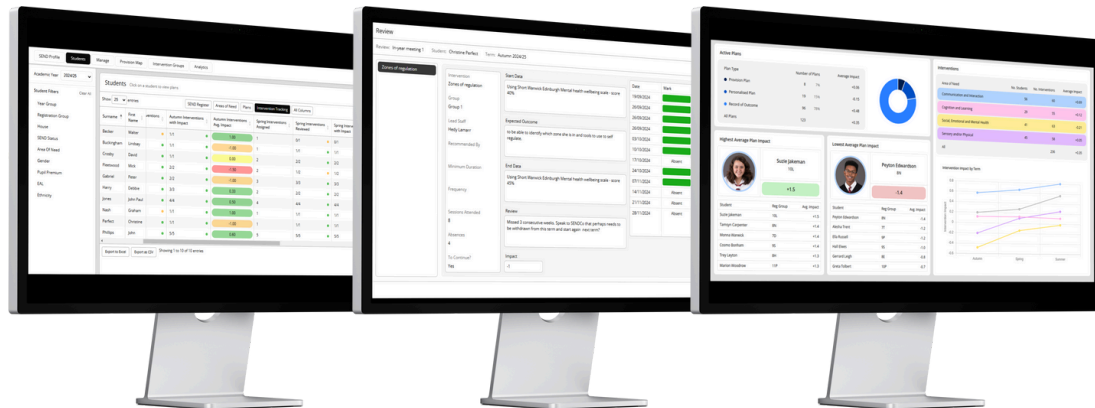
Evaluate

Impact of a Student plan

Impact of an intervention

Impact for an area of need

Impact of a Provision Map



Connect To Your MIS

Understand the profile of your students using the data in your MIS.
Let the student areas of need drive your resource planning.



Quick and easy

Secure

Next Steps

1

Book your free demo

Use the QR to arrange a 30 minute meeting with a member of the team



2

Decision made

Prices will depend on the size of your school. We will send you a license agreement for signing

3

Approve Wonde connection

Once you have approved the Wonde connection your MIS data will seamlessly flow into ProvisionVue ready for you to use

4

Start using ProvisionVue

Your administrator will be issued a welcome email and our team will be there to support them to get up and running



ProvisionVue



www.schoolvue.co.uk
hello@schoolvue.co.uk
Book your free demo here

